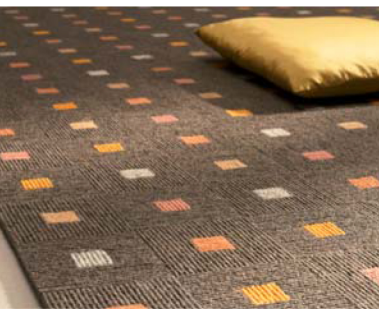


Carpets for your favorite places



LA MAISON ECOLOGIQUE
SHOP, SOLUTIONS, CONSTRUCTION





Superior materials, a timeless and clean design as well as marvelously beautiful colors set the tone for INTERART carpets. Elegant and restrained or colorful, they fit very nicely into all manner of interior design concepts.

These carpets are truly incomparable. Made in Germany at tretford's corporate head-quarters and manufacturing center in Wesel on the Lower Rhine, they are meticulously handcrafted with a great love of detail. tretford's time-tested carpet material (80 % Cashmere goat hair and 20 % virgin wool) delivers the foundation for the extensive color range of these small works of art. INTERART carpets can be customized to client specifications and allow extraordinary design flexibility.

A selection of pre-made designs is offered by tretford. But if you desire a custom version based on your own ideas with regard to color combination, design or size, we will make it for you. INTERART carpets are characterized by the delicate interplay of their colors, forms and textures. Beyond this, they are also hard-wearing and easy maintenance.

Let yourself be inspired...



True gems...

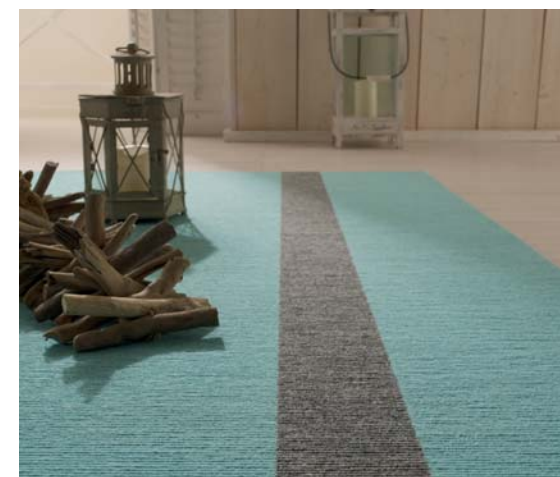
INTERART 310



These carpets are more than just an accessory for your living spaces; they are true gems that make it easy to create and design to your heart's content and to bring fresh color accents to your home.

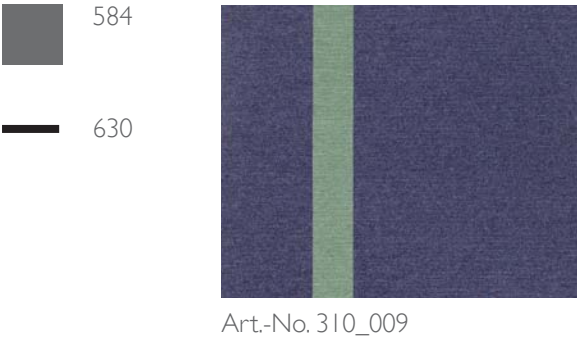
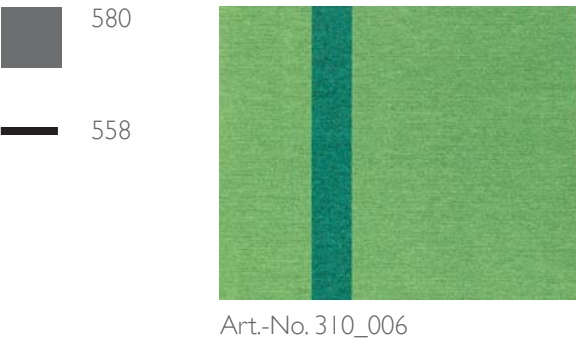
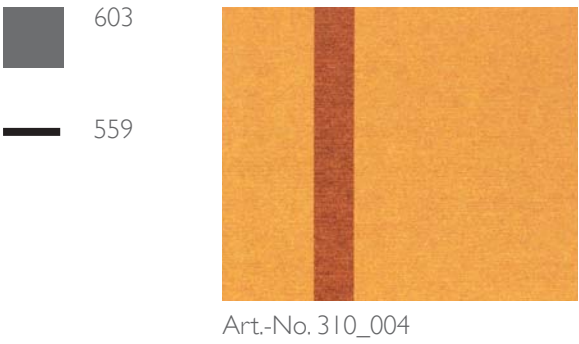
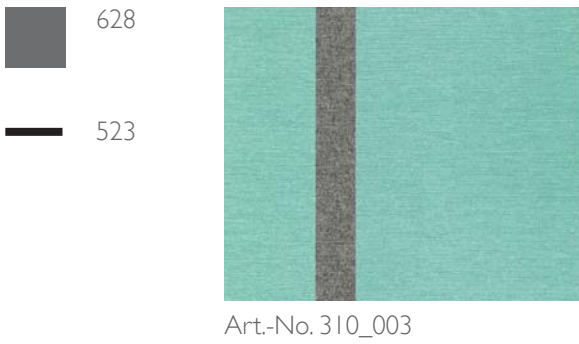
They can be fashioned with a touch of "beach flair" for a holiday escape home or designed to befit a modern apartment that oozes urban chic. Decide on a look for your "oasis of relaxation". The choice is yours entirely.

Some tips and recommendations for proportions and color combinations will be presented to you on the following pages – but nobody is stopping you from executing your own original ideas...



Color combinations and Proportions

INTERART 310



Basic color (tretford color code)

Stripes (tretford color code)

Recommended proportions*

170 x 120	20	8	114	8	20
170 x 170					
A 200 x 145	25	10	135	10	25
B 200 x 200					
230 x 170	27	10	156	10	27
200 x 230					
250 x 180	29	11	170	11	29
250 x 250					
300 x 220	38	12	200 (max.)	12	38
300 x 300					



*Other dimensions possible on request



Faithful companions...

INTERART 320



Carpets have a long tradition. Since time immemorial, mankind has cherished the comfort of a warm, soft, textile material. And for just as long, carpets have accompanied humanity – both on journeys and at home.

INTERART carpets are made with natural Cashmere goat hair and wool. This material is warm and soft – yet also very robust. Your carpet thus is sure to be a loyal companion for many years to come.

This particular rendition – with its sunny color combination – will bring both color and warmth to a room...





Nomads have always known the value of a carpet – not just for the purpose of warmth but also as a decorative element in the round tents that serve as their traditional homes. The raw materials used are found in their immediate environment, namely in the sheep and goats herds that they steward. At tretford, we also use natural materials – robust Cashmere goat hair and soft wool.

We make carpets for globetrotters and for those who have settled down alike; for private domiciles, lounges and hotels. Turn to individual color choices to mark your favorite place and lavish it with a look of versatile yet uncomplicated beauty.

For more inspiration, continue on to the next pages...



Color combinations (two-toned or tricolored)

515

523

Art-No. 320_001

515

512

Art-No. 320_002

628

631

Art-No.320_010 Art-No. 320_009

632

601

Art-No. 320_012 Art-No.320_011

632

523

Art-No. 320_003

632

538

Art-No. 320_004

559

515

Art-No. 320_014 Art-No.320_013

630

558

Art-No. 320_016 Art-No. 320_015

603

559

Art-No. 320_005

603

585

Art-No. 320_006

630

581

Art-No. 320_018 Art-No. 320_017

568

524

Art-No. 320_020 Art-No. 320_019

590

601

Art-No. 320_007

590

559

Art-No. 320_008

559

567

Art-No. 320_022 Art-No. 320_021

558

581

Art-No. 320_024 Art-No. 320_023

Basic color (tretford color code)

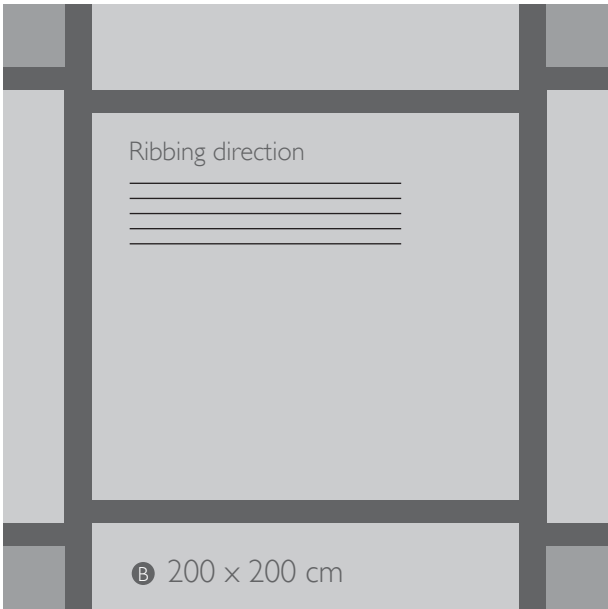
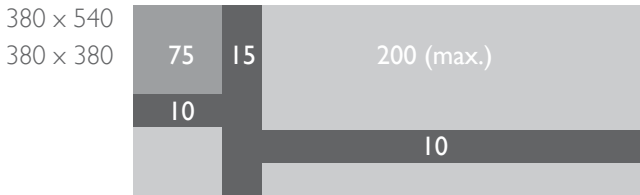
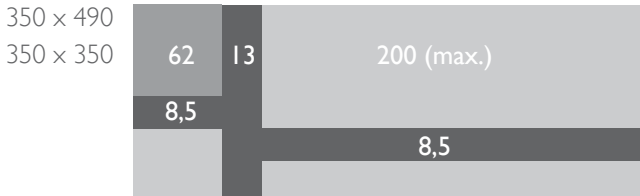
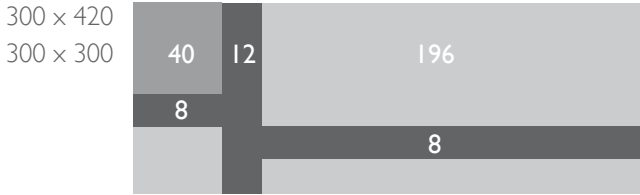
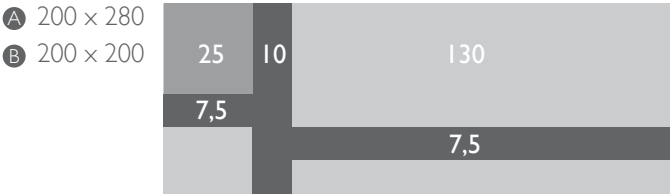
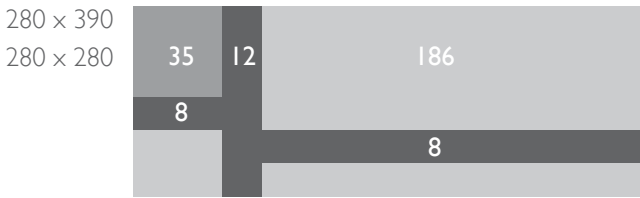
Stripes (tretford color code)

Corners (tretford color code)





Recommended proportions*



*Other dimensions possible on request



Eye-catching...



INTERART 330

From an early time, carpets came to be appreciated not just for their practical and warming function but also for their decorative character.

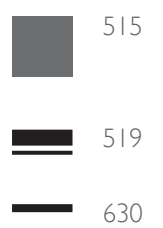
This minimalist design with one stripe brings a sense of calm to any room. At the same time, the material is warm, robust and easy-care.

Used as an eye-catcher, these carpets are extraordinarily versatile. Put one in your foyer or in a cozy reading corner; they are perfect anywhere you envision a little island of tranquility...

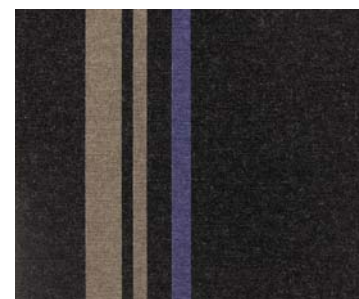
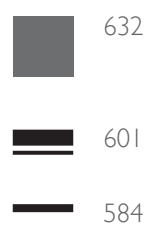


Color combinations and Proportions

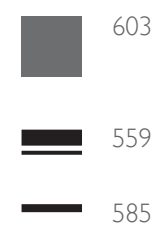
INTERART 330



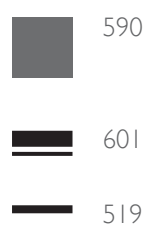
Art.-Nr. 330_001



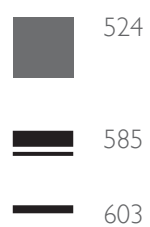
Art.-Nr. 330_002



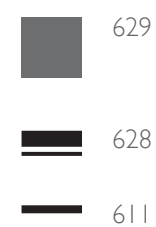
Art.-Nr. 330_003



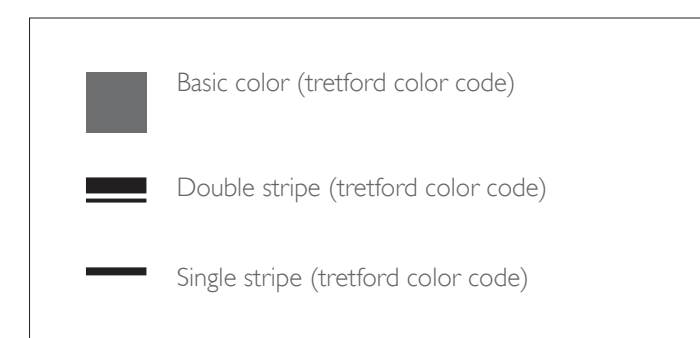
Art.-Nr. 330_004



Art.-Nr. 330_005



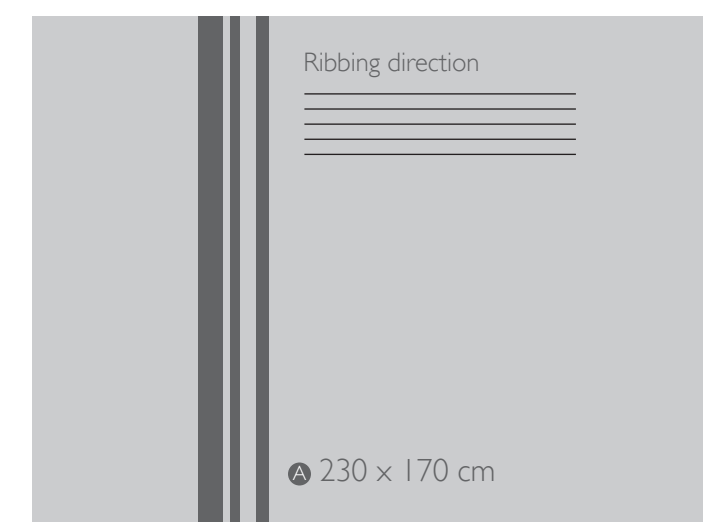
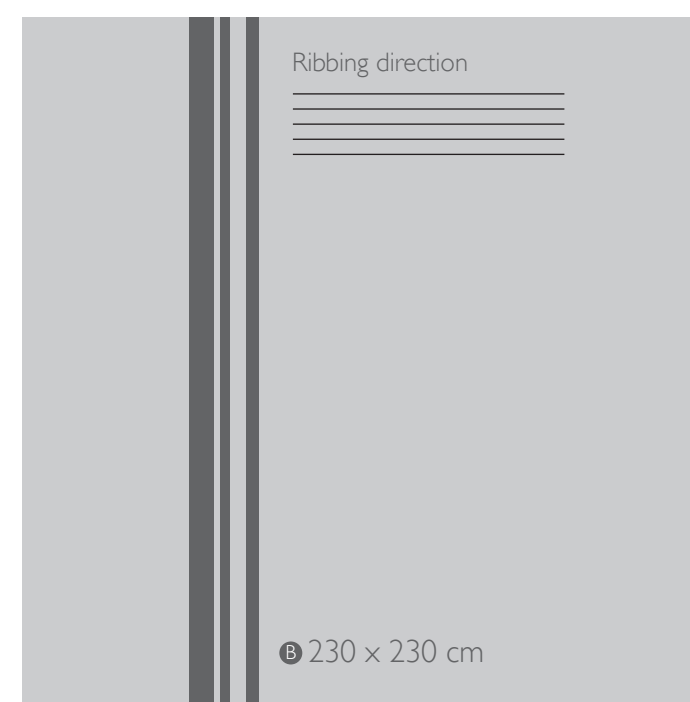
Art.-Nr. 330_006



Recommended proportions*

170 × 120	38	8	2,5	3	5,5	4	109
170 × 170							
200 × 145	45	8	2,5	3	5,5	4	132
200 × 200							
^A 230 × 170	55	8	2,5	3	5,5	4	152
^B 230 × 230							
250 × 180	60	8	2,5	3	5,5	4	167
250 × 250							
280 × 200	68	9	3	3,5	6	4,5	186
280 × 280							
300 × 220	75	9	3	3,5	6	4,5	199 (max.)
300 × 300							

*Other dimensions possible on request



Sonorous...

INTERART 110



This carpet design exhibits a perfect interplay of color, form and texture.

The color compositions vary greatly; from loud to subdued and from calm to sonorous. They evoke images of a fledgling spring or fragrant spices.

And they too are handcrafted to exacting standards. The natural pile material, Cashmere goat hair and new wool, confers the carpet's special attributes: They are luxurious, warm and extraordinary...



Color combinations

INTERART 110



Art.-No. 110_101
582 / 585*



Art.-No. 110_102
582 / 585 / 588 / 591 / 602 / 614*



Art.-No. 110_103
582 / 585 / 591 / 602 / 603 / 614*



Art.-No. 110_116
555 / 571*



Art.-No. 110_117
555 / 571 / 532 / 572 / 601 / 620*



Art.-No. 110_118
555 / 572 / 590 / 601 / 607 / 620*



Art.-No. 110_110
570 / 582*



Art.-No. 110_111
570 / 582 / 585 / 588 / 591 / 602*



Art.-No. 110_112
570 / 585 / 591 / 602 / 603 / 614*



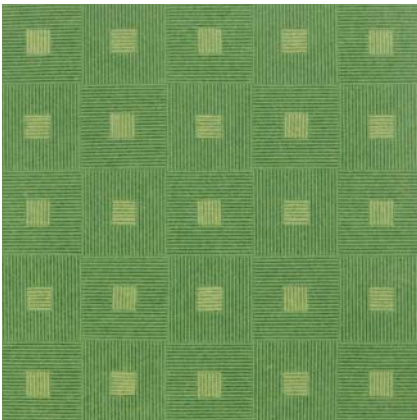
Art.-No. 110_104
601 / 571*



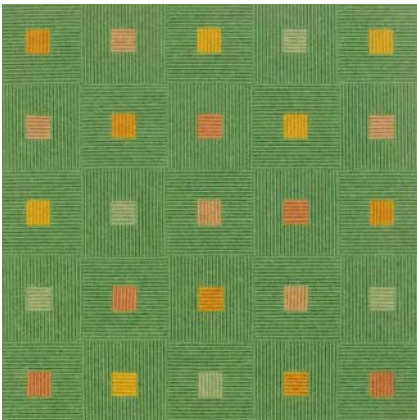
Art.-No. 110_105
601 / 515 / 555 / 571 / 602 / 613*



Art.-No. 110_106
601 / 515 / 588 / 591 / 602 / 603*



Art.-No. 110_107
580 / 622*



Art.-No. 110_108
580 / 568 / 591 / 602 / 603 / 622*



Art.-No. 110_109
580 / 517 / 568 / 570 / 585 / 603*



Art.-No. 110_113
534 / 512*



Art.-No. 110_114
534 / 512 / 538 / 523 / 571 / 601*



Art.-No. 110_115
534 / 555 / 571 / 572 / 601 / 607*

Sizes: from approx. 70 x 70 cm in 10-cm increments (one square: ca. 10 x 10 cm) to approx. 400 x 400 cm



Doing a double take...

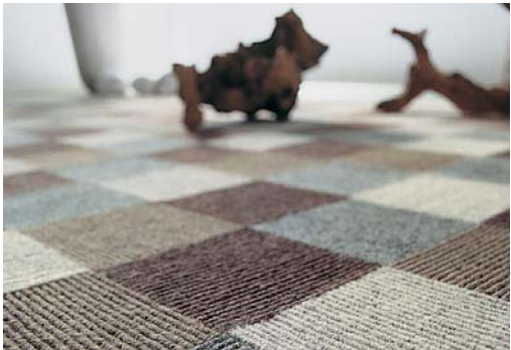
INTERART 210



These carpets invite you to temporarily abandon your fast-paced routine by offering a welcome sanctuary. Their minimalist design aesthetic, featuring squares of 10 x 10 cm, sets very different room accents depending on the color palette.

The Cashmere goat hair and wool are warm and soft yet also firm. The use of such superior materials provides a luxurious feel underfoot and entices one to come and sit in repose.

Whether hotel, lounge or private residence, these handcrafted carpets create atmospheric oases and highlight your favorite spot.



Farbkombinationen

INTERART 210

RUNNERS



Art-No. 210_001
519 / 524 / 559 / 560 / 564*



Art-No. 210_002
515 / 523 / 601 / 607*



Art-No. 210_003
515 / 516 / 517 / 523 / 558 / 566 / 568 / 570
575 / 580 / 581 / 582 / 585 / 588 / 591 / 592*



Art-No. 210_004
582 / 585 / 591 / 602 / 603*



Art-No. 210_010
570 / 582 / 585 / 591 / 524*



Art-No. 210_011
566 / 569 / 580 / 565 / 622*



Art-No. 210_007
568 / 585 / 588 / 602 / 603*



Art-No. 210_008
570 / 582 / 585 / 591 / 602*



Art-No. 210_009
580 / 585 / 591 / 602 / 622*

Sizes: from approx. 70 x 70 cm in 10-cm increments (one square: ca. 10 x 10 cm) to approx. 400 x 400 cm



To complement the INTERART carpet line, tretford also offers monochrome runner carpets with underfoot warmth and durability. They are 1-meter wide and come in lengths of up to 22 meters. A palette encompassing 40 colors is available to choose from. Suitable colored edging rounds out the carpet's look.



Playing, learning, relaxing, combining and experimenting, tretford's arrow carpets stimulate a child's imagination and enhance their fun at play. They are manufactured using tretford's durable, colorful Interland-line material and come with convenient ComBack backing. The all-natural pile material (80% Cashmere goat hair and 20% virgin wool) has a sustainable lifecycle and gives these attention-getters the traits for which they are so much appreciated: Robustness and an easy-care reputation.

tretford's round carpets (2-meters in diameter) made of Interland material will also invite a child to linger and play.

